

**Chaffey-Burke PAC Meeting Minutes
February 21, 2019 9:15am, Staff Room**

Start time: 9:15am

Location: Staff Room

In attendance: Mr. Claudio Bortolussi (Principal), Ms. Kim Clark (Vice-Principal), Eugene Lin (Chair), Irene Yung (Treasurer), Cindy Pan (Vice-Chair), Di Li (Secretary), Catherine Qiao, Asma Bhatti, Ellen Wong

Regrets: Ms. Carlene Montgomery (Head Teacher)

1. Approval of the agenda
Motioned, Seconded, Motion Carried
2. Approval of Minutes of Previous Meeting held on January 17, 2019
Motioned, Seconded, Motion Carried
3. Principal's report (Claudio)
 - Current school population is 563 with 137 ins/outs since last September.
 - Grade 4 classes are full.
 - School review was done on February 7th, (report as attached), it was also discussed at the staff meeting on February 20th. Few highlights are:
 - School population is stable with 150-170 ins/outs on an annual basis.
 - District data shows that grade 2 boys are low in language arts; for grade 7, there is a large gap between the district and provincial averages.
 - School data uses the data from reading and self-assessment in the spring and fall to compare.
 - Provincial data FSA Fraser Institute report shows we are # 8 in the Province based on its filtered population. MDI (Middle Years Development Instrument) shows 42% of children are only connected to one adult which is the largest gap compared to the rest of the district.
 - Chaffey-Burke has large ELL population, 300+ kids speak a second language. School believes non-fiction reading is the best way for them to be successful in the future.
 - Chaffey-Burke is at the district standards on reading comprehension, school provides extra support to those students who need support on reading.
 - Looking at the percentage of "Self-Assessment Core competencies", from 70% (grade 1 kids) to 90% (grade 7 kids) shows a huge difference in kids' ability to self-assess and a real effect in the school.
 - Circled graphs show the biggest gaps, including the gap found in grade 2 boys in language art mentioned in the district data.
 - School tries to balance the whole school growth and with individual support.
 - On April 9th (1pm-3pm), district will come Chaffey-Burke to do a full school review, district wants to hear the input from parents as well (parents are welcome to come to the meeting).
 - Mrs. Clark and 4 classroom teachers have attended the video conferencing with Mr. Lee Watanabe-Crockett and shared at the staff meeting.

- “Art Starts” program starts on March 1st.
- Spring break is from March 18th - 29th
- Teachers are working on either three-way conferences or student-led conferences. There will be two early dismissal days, one is before spring break, and the other is after spring break to accommodate with the conferences and reporting.
- Report cards will be sent to home after spring break.
- District has implemented a different scale with more descriptive words in the report card, the notice with detailed information has been sent to home.
- Mr. Bortolussi and Mrs. Clark have met with Tom Schimmer, classroom assessment expert, he talked about the language of the assessment and what it actually looks like. There has been a shift in the role of competencies and content.

4. Treasurer’s report (Irene)

- Treasurer’s report as attached

5. Business arising from previous meeting

- School Event Review & Updates
 - Teacher's appreciation lunch
Action: Catherine and 3 parent volunteers will help, planned on May 10th
 - Emergency preparedness / BC Quake fundraising / Earthquake protocols and kits
Action: Mr. Bortolussi to pick a date.
 - DPAC – January 21, 2019 @ 7:00 pm – 9:00 pm
Cancelled, due to the weather condition.
- Fundraising Events/Community Building Activities
 - Snack Sale
Reviewed by Irene in the treasurer’s report
 - Movie night
March 1st will be the next movie night
 - PAC Direct Donation
Action: Irene to prepare another letter to be sent out.
 - Creative Packs school supply fundraising
It was very successful last school year.
Action: Irene will work with Jetty and Mrs. Montgomery to prepare the school supply list, and extra supplies if needed.
 - Greeting Card Fundraiser
No parent volunteers, PAC will try next school year.
 - Special lunch
Number of orders increased this year. PAC may extend the special lunch program.
Action: Ellen to find a date and prepare a letter to invite parents to discuss the special lunch program for next school year, its lunch menu, etc.
- Other possible events
 - Milk and Juice Program
Eugene, Cindy and Mr. Bortolussi have decided to cancel the milk and juice program after spring break due to the amount of work and time put into this program, although the revenue from this program gives school the flexibility to use the fund in a variety

of ways to support kids and programs in our school. School has a separate bank account set up for the milk and juice program in order to be open and transparent to the inquires how the money was spent. Mr. Bortolussi publishes the spending of this fund annually as well.

6. New Business
7. Meeting adjourned: 10:09 am. Next meeting will be on Thursday April 18, 2019 at 9:15am in the Staff Room.

TREASURER'S REPORT

February 21, 2019

1.

Bank Balances @ Feb 1st, 2019	
Vancity PAC General	6,749.54
Vancity Gaming Account	8,756.50
PAC School Account	16,915.74
February 1, 2019 Balance	31,421.78

Snack sales of \$536.10 for January.

2. Hot lunch profit of approximately \$2,463.18 from October to January. Final profit for first round still to be determined.
3. Parent Direct Donations of \$4,440.00 YTD plus balance carried over from last year of \$3,138.00 for a total of \$7,578.00. Will go out to parents for one last push before Spring Break.
4. Still waiting to hear from Burnaby Parks, Recreation and Cultural Service on the Playground Development Grant for a maximum of \$4,000.00.

School Plan Data Analysis

February 7th

To be shared and discussed with Director and Staff for the upcoming planning for our next 3 year development planning. Along with the recommendations from the district personnel.

School Population: 570

Stable Numerical Population.

Currently we have an annual Transition rate of about 30 % annually, which works out to between 150 -170 in's & out's annually for our school.

District Data

Currently Tracking Primary Boys, Grade 2 who are low in all Language areas

***Primary Reading is lower than other areas in our school, monitoring and tracking

Grade 7's reading large gap between, district numbers and school numbers

Intermediate boys are lower than intermediate girls (measurable gap > 5%)

School Data-

Reading – Using the district PS rubric we collect fall data shows some grade levels require attention – many of the school tiered interventions support those groups (RTI)

Self-Assessment – The Rubric and analysis shows that students in the intermediate grades are getting better at self –assessment and reflection and that in the lower grades that is a challenge , perhaps that is due to their lack of cognitive awareness (this is something we should look at a little more closer at

Provincial Data

F.S.A. Fraser Institute report

Chaffey - Burke is # 8 in the Province based on its filtered population, > 50% + 10% Special Needs Population

M.D.I Data – 42 % of are only connected to 1 individual at school (large gap to the rest of the district < 20%

661004

2018/19 Primary Language Spoken at Home

Chaffey-Burke Elementary

Primary language spoken at home	Grade							Total	Total as % of school
	K	01	02	03	04	05	06		
ARABIC	2	1	2	1		2	1	10	1.8
BENGALI			1		1			2	0.4
BOSNIEN			1					1	0.2
CANTONESE/MANDARIN	15	24	19	22	26	24	31	186	33.5
CZECH	1							1	0.2
ENGLISH	25	30	29	15	22	19	16	175	31.5
ETHIOPIAN / AMARTIC	1	1						2	0.4
FAEROESE						1		1	0.2
FRENCH	1	1						1	0.5
GUJARATI	1		3			1		3	0.9
HINDI	5	4	3	3	6	3	1	26	4.7
JAPANESE		1	1	1	3	2		11	2.0
KOREAN	1	1		2	2	3	5	17	3.1
KURDISH			1	1	1	1		4	0.7
MALAYALAM						2		2	0.4
MARATHI	1		1					3	0.5
OTHER LANGUAGES	1	3	2	1	1		2	11	2.0
PERSIAN	1			1	1		1	4	0.7
PORTUGUESE	2	2	2	3	2	1	2	16	2.9
PUNJABI	3			1				4	0.7
ROMANIAN	1	1						2	0.4
RUSSIAN	4	2	5	1	3	2	3	22	4.0
SERBIAN			2		1	1	1	5	0.9
SPANISH	1	1	2		2	1		10	1.8
TAGALOG/PILIPINO		3				5	1	11	2.0
TAMIL		1	1					2	0.4
TELUUGU	2	2		2	3	1		11	2.0
URDU			1		1		1	3	0.5
VIETNAMESE		2	1	1		2		6	1.1
TOTAL	68	80	77	55	75	71	65	556	100.0

Source: 2018 September 1701

2018-2019 Performance Standards - Self-Assessment Core Competencies

School /Class:

Chaffey-Burke

Number of Students: (Count students in Total and one other column only)

	ELL Levels 1 and 2	On a modified program	Student Learning Plan	Not Yet Within Expectations	Meeting Expectations (Minimal Level)	Fully Meets Expectations	Exceeds Expectations	Total in School /Class
Male (including Aboriginal and ELL)	1			11	22	4	0	37
	2			9	14	6	0	29
	3			3	15	7	0	25
	4			3	14	17	0	34
	5			4	10	12	2	28
	6			4	15	10	4	33
	7			3	7	11	5	26

Female (including Aboriginal and ELL)	1			4	17	6	0	27
	2			4	22	10	0	36
	3			2	10	19	0	31
	4				7	13	2	22
	5			1	4	12	13	30
	6			1	3	14	7	25
	7			1	4	11	9	25

Aboriginal	1							
	2							
	3							
	4							
	5							
	6							
	7							

ELL Levels 1 and 2	1	Level 1 and 2 ELL students not measured on grade level Performance Standards scale Please only record in the total column →	
	2		
	3		
	4		
	5		
	6		
	7		

ELL Levels 3 and 4	1							
	2							
	3							
	4							
	5							
	6							
	7							

2018-2019 Performance Standards - Reading DRA

School /Class:

Chaffey-Burke

Number of Students: (Count students in Total and one other column only)

	ELL Levels 1 and 2	On a modified program	Student Learning Plan	Not Yet Within Expectations	Meeting Expectations (Minimal Level)	Fully Meets Expectations	Exceeds Expectations	Total in School /Class
Male	1			17	10	11	2	40
	2			9	11	16	0	36
(including Aboriginal and ELL)	3			3	13	9	0	25
	4			6	13	12	3	34
	5			4	12	10	2	28
	6			5	17	14	2	38
	7			5	6	18	5	34

Female	1			5	18	11	1	35
	2			2	16	18	0	36
(including Aboriginal and ELL)	3			0	14	18	0	32
	4			2	10	10	0	22
	5			1	4	17	7	29
	6			1	2	19	6	28
	7			5	6	16	5	32

Aboriginal	1							
	2							
	3							
	4							
	5							
	6							
	7							

ELL	1	Level 1 and 2 ELL students not measured on grade level Performance Standards scale. Please only record in the total column.						
	2							
Levels 1 and 2	3							
	4							
	5							
	6							
	7							

ELL	1							
	2							
Levels 3 and 4	3							
	4							
	5							
	6							
	7							

2018-2019 Performance Standards - Reading DRA

School /Class:

Chaffey-Burke

	Grade	Not Yet Within Expectations	Meeting Expectations (Minimal Level)	Fully Meets Expectations	Exceeds Expectations	Total in School /Class	Percentage of students Meeting Expectations
Male and Female	1	22	28	22	3	75	71%
	2	11	27	34	0	72	83%
	3	3	27	27	0	57	94%
	4	8	23	22	3	56	87%
	5	5	16	27	9	57	81%
	6	6	19	33	8	66	79%
	7	10	12	34	10	66	85%

2018-2019 Performance Standards - Self-Assessment Core Competencies

School /Class:

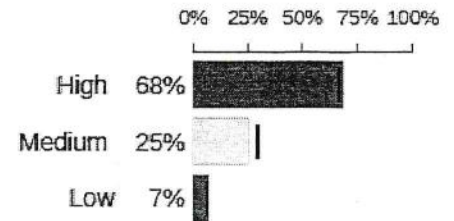
Chaffey-Burke

	Grade	Not Yet Within Expectations	Meeting Expectations (Minimal Level)	Fully Meets Expectations	Exceeds Expectations	Total in School /Class	Percentage of Students Meeting Expectations
Male and Female	1	15	39	10	0	64	76%
	2	13	36	16	0	65	81%
	3	5	25	26	0	56	91%
	4	3	21	30	2	56	96%
	5	5	14	24	15	58	91%
	6	5	18	24	11	58	91%
	7	4	11	22	14	51	92%

CONNECTEDNESS WITH ADULTS

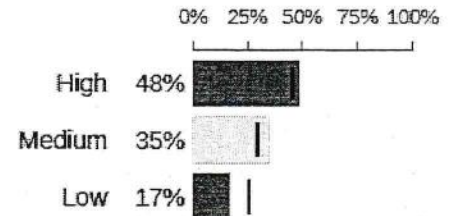
ADULTS AT SCHOOL

Assesses the quality of relationships children have with the adults they interact with at school. e.g. "At my school there is an adult who believes I will be a success."



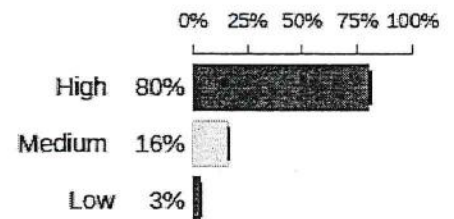
ADULTS IN THE NEIGHBOURHOOD/COMMUNITY

Assesses the quality of relationships children have with the adults they interact with in their neighbourhood or community. e.g. "In my neighbourhood/community there is an adult who really cares about me."

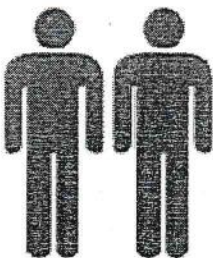


ADULTS AT HOME

Assesses the quality of relationships children have with the adults in their home. e.g. "In my home there is a parent or other adult who listens to me when I have something to say."



NUMBER OF IMPORTANT ADULTS AT SCHOOL



42%
2 or more



17%
One



41%
None

2017/18 Language Arts Report Card Summary

Intermediate - Reading

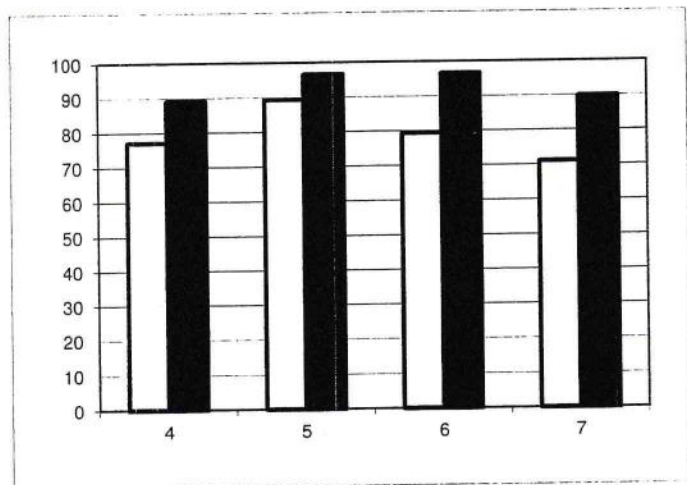
Percentage of Students Achieving C or Above

Chaffey-B - Gender Split

	4	5	6	7
Boys	77	89	79	71
Girls	89	97	97	90

Boys

Girls

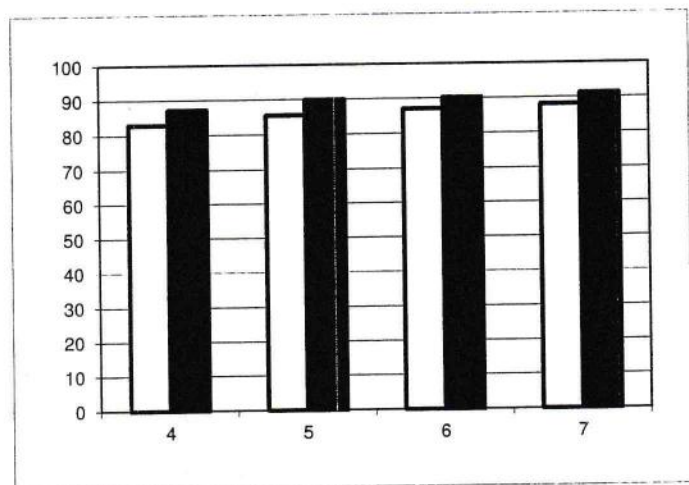


Burnaby - Gender Split

	4	5	6	7
Boys	83	86	87	88
Girls	87	90	90	91

Boys

Girls



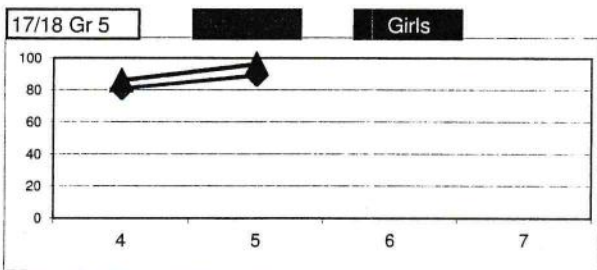
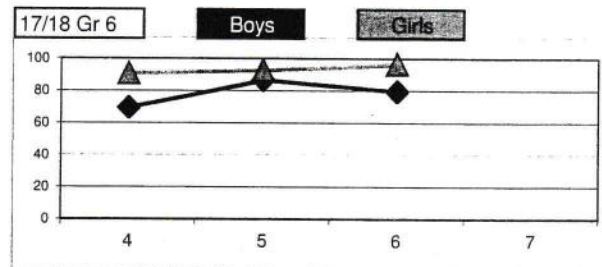
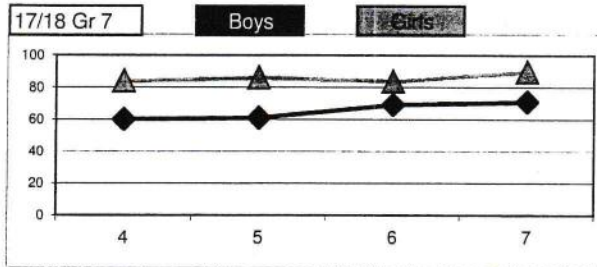
2017/18 Language Arts Report Card Summary

Intermediate - Reading

Chaffey-B Gender Cohort Tracking

Boys	4	5	6	7
17/18 Gr 7	60	61	69	71
17/18 Gr 6	70	87	79	

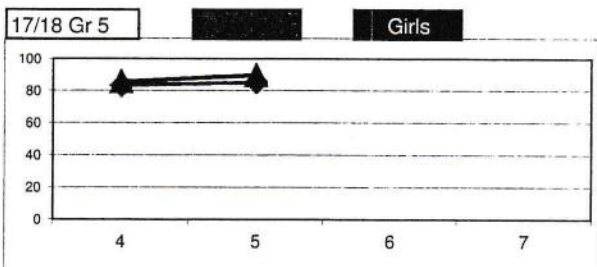
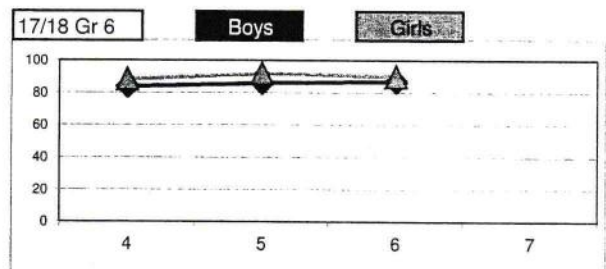
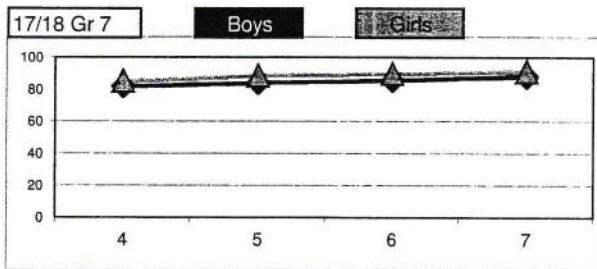
Girls	4	5	6	7
17/18 Gr 7	84	86	84	90
17/18 Gr 5	86	97		



Burnaby Cohort Tracking

Boys	4	5	6	7
17/18 Gr 7	82	84	86	88
17/18 Gr 6	84	86	87	

Girls	4	5	6	7
17/18 Gr 7	85	89	90	91
17/18 Gr 6	89	92	90	
17/18 Gr 5	86	90		



2017/18 Language Arts Report Card Summary

Intermediate - Reading

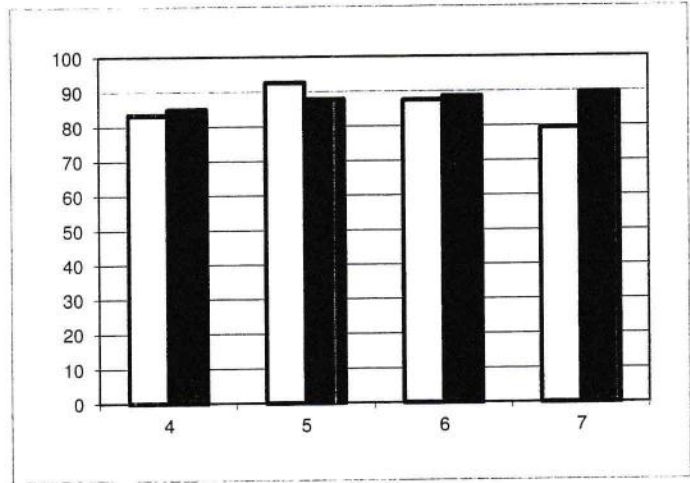
Percentage of Students Achieving C or Above

All Students

	4	5	6	7
Chaffey-B	83	93	88	79
Burnaby	85	88	89	90

Chaffey-B

Burnaby



2017/18 Language Arts Report Card Summary

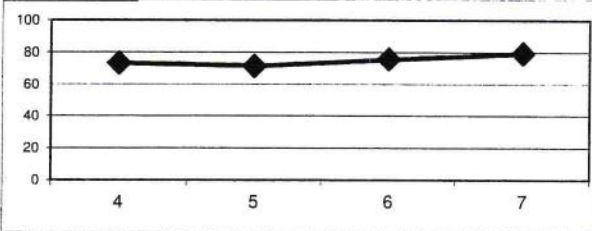
Intermediate - Reading

Percentage of Students Achieving C or Above

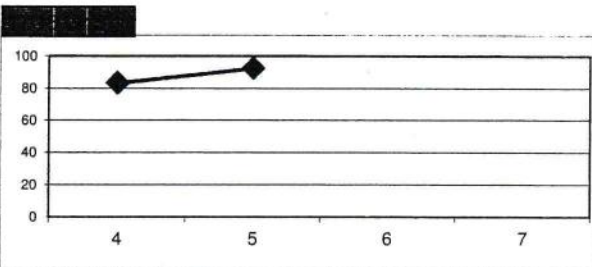
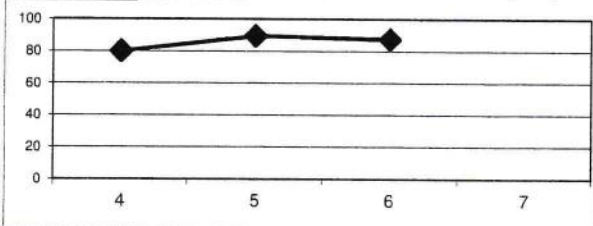
Chaffey-B Cohort Tracking

	4	5	6	7
17/18 Gr 7	73	71	76	79
17/18 Gr 6	80	90	88	

17/18 Gr 7



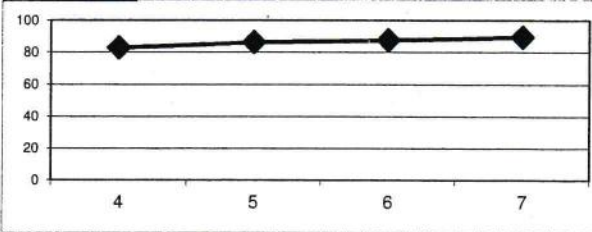
17/18 Gr 6



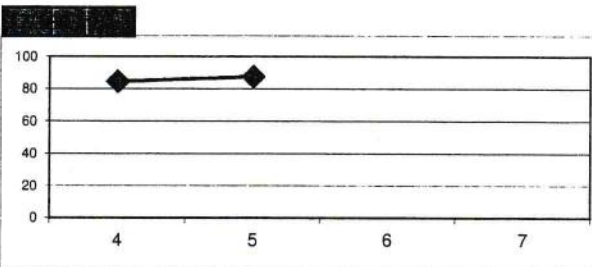
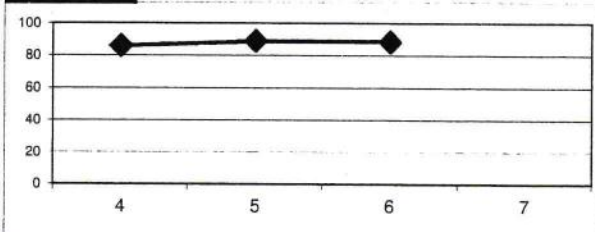
Burnaby Cohort Tracking

	4	5	6	7
17/18 Gr 7	83	86	88	90
17/18 Gr 6	86	89	89	

17/18 Gr 7



17/18 Gr 6



2017/18 Language Arts Report Card Summary

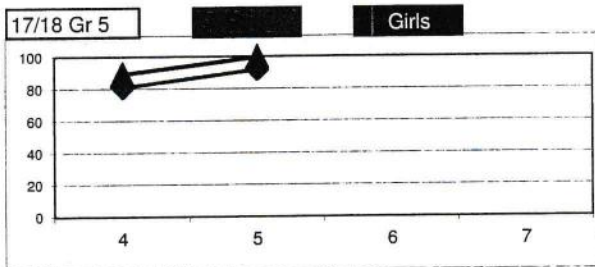
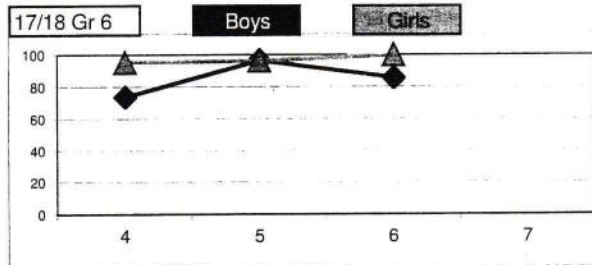
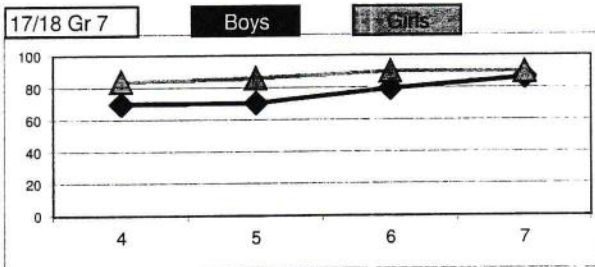
Intermediate - Oral Language

Percentage of Students Achieving C or Above

Chaffey-B Gender Cohort Tracking

Boys	4	5	6	7
17/18 Gr 7	70	71	79	86
17/18 Gr 6	74	97	86	

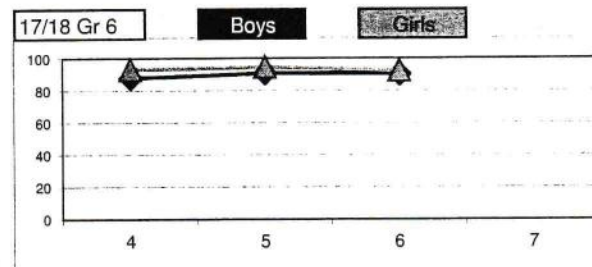
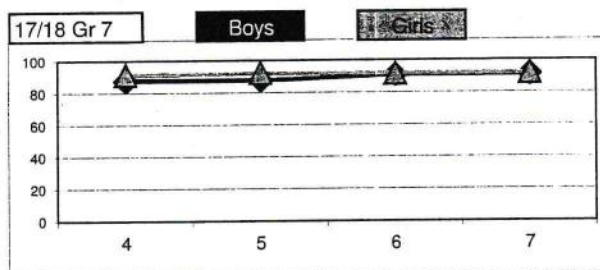
Girls	4	5	6	7
17/18 Gr 7	84	86	90	90
17/18 Gr 5	89	100		



Burnaby Cohort Tracking

Boys	4	5	6	7
17/18 Gr 7	88	88	91	91
17/18 Gr 6	88	91	90	

Girls	4	5	6	7
17/18 Gr 7	91	92	92	92
17/18 Gr 6	91	93		



2017/18 Language Arts Report Card Summary

Intermediate - Oral Language

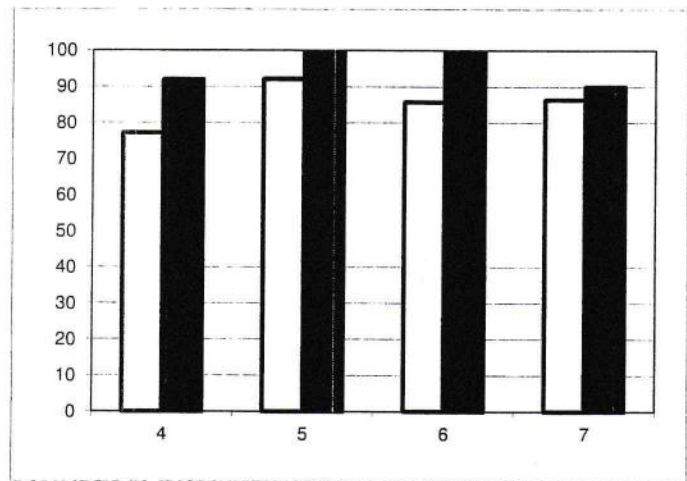
Percentage of Students Achieving C or Above

Chaffey-B - Gender Split

	4	5	6	7
Boys	77	92	86	86
Girls	92	100	100	90

Boys

Girls

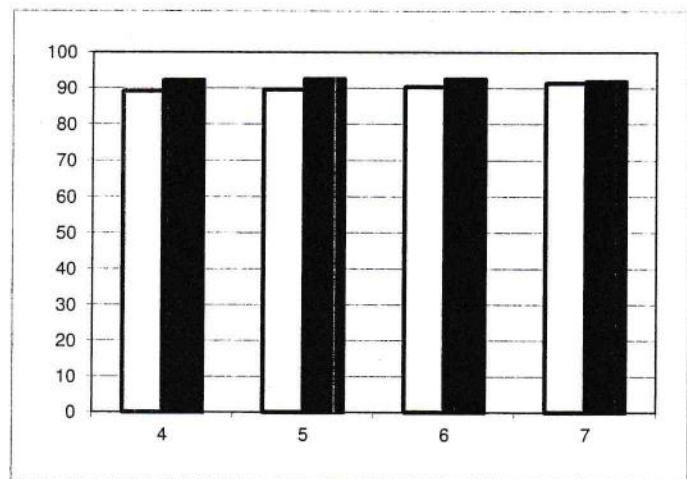


Burnaby - Gender Split

	4	5	6	7
Boys	89	90	90	91
Girls	92	93	92	92

Boys

Girls



2017/18 Language Arts Report Card Summary

Intermediate - Oral Language

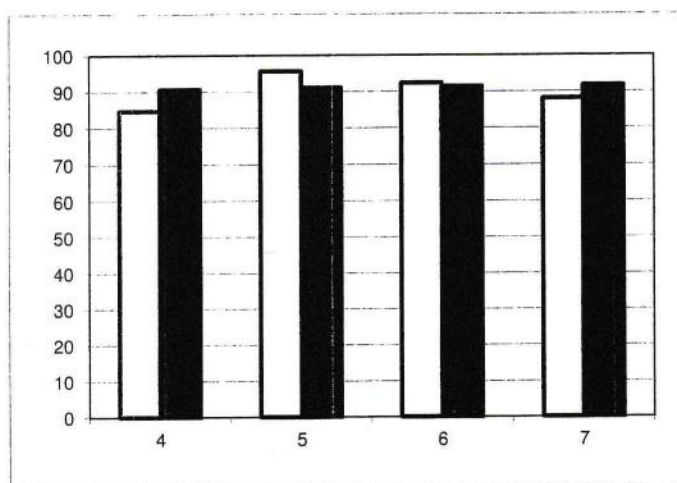
Percentage of Students Achieving C or Above

All Students

	4	5	6	7
Chaffey-B	85	96	92	88
Burnaby	91	91	91	92

Chaffey-B

Burnaby



2017/18 Language Arts Report Card Summary

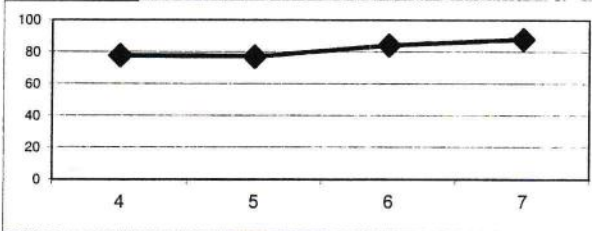
Intermediate - Oral Language

Percentage of Students Achieving C or Above

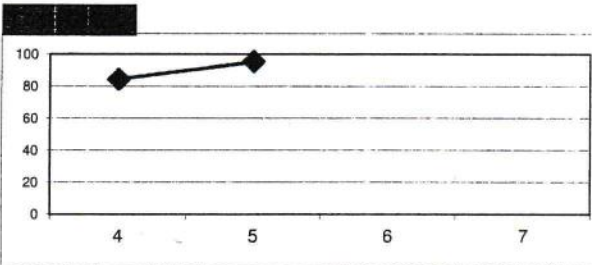
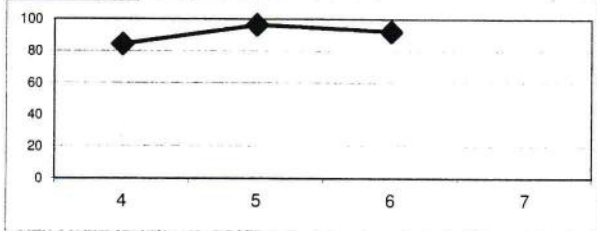
Chaffey-B Cohort Tracking

	4	5	6	7
17/18 Gr 7	78	77	84	88
17/18 Gr 6	84	97	92	

17/18 Gr 7



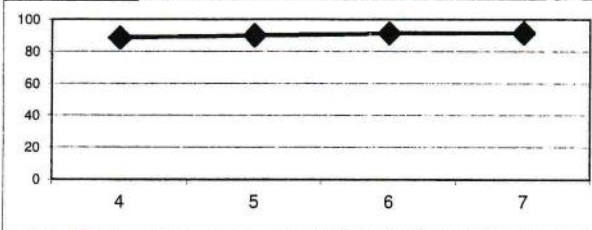
17/18 Gr 6



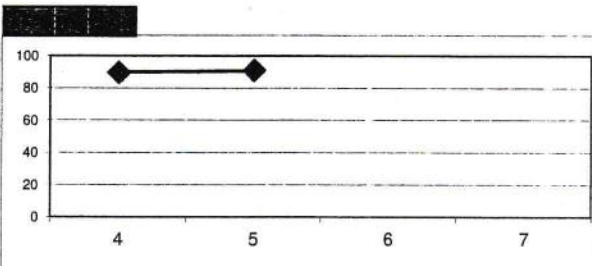
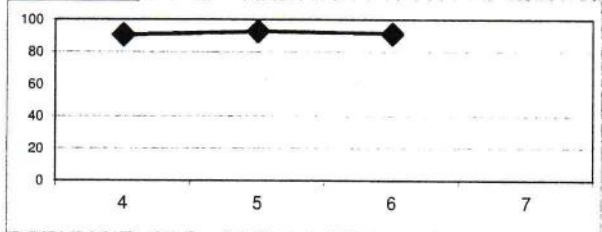
Burnaby Cohort Tracking

	4	5	6	7
17/18 Gr 7	89	90	91	92
17/18 Gr 6	90	93	91	

17/18 Gr 7



17/18 Gr 6



2017/18 Language Arts Report Card Summary

Intermediate - Writing

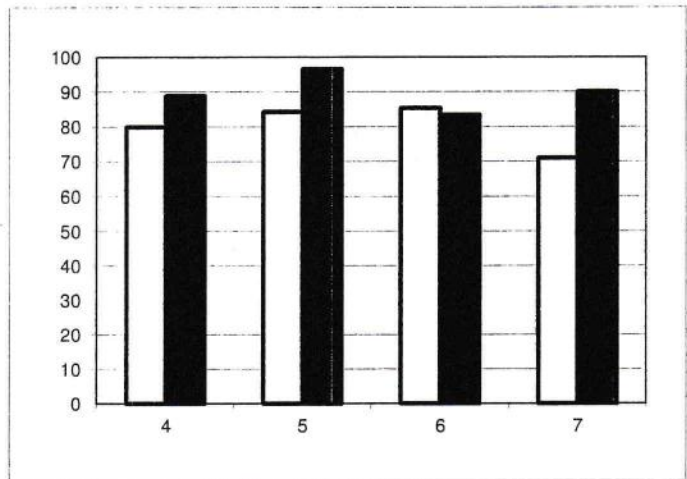
Percentage of Students Achieving C or Above

Chaffey-B - Gender Split

	4	5	6	7
Boys	80	84	85	71
Girls	89	97	83	90

Boys

Girls

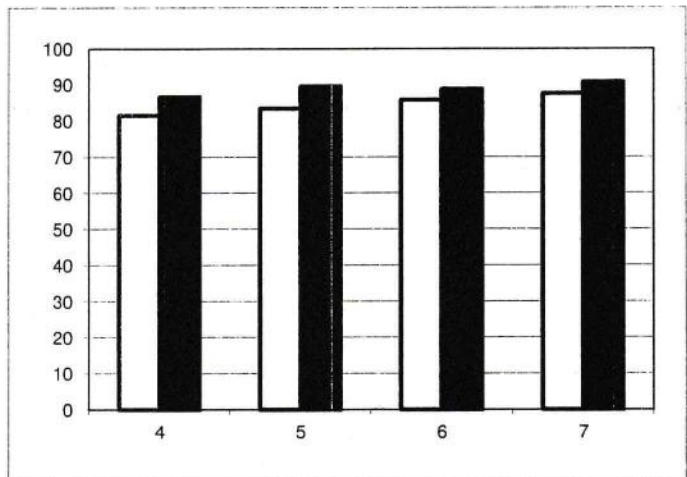


Burnaby - Gender Split

	4	5	6	7
Boys	82	83	86	87
Girls	87	90	89	91

Boys

Girls



2017/18 Language Arts Report Card Summary

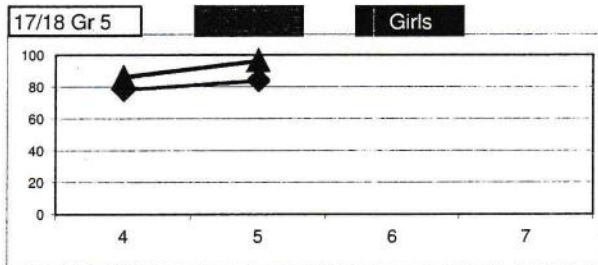
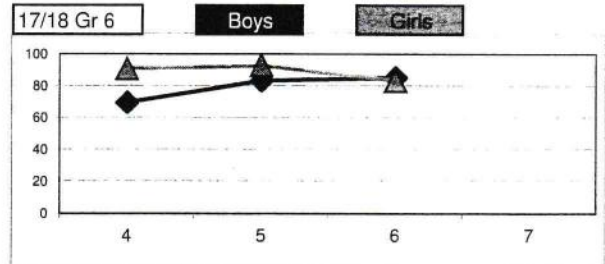
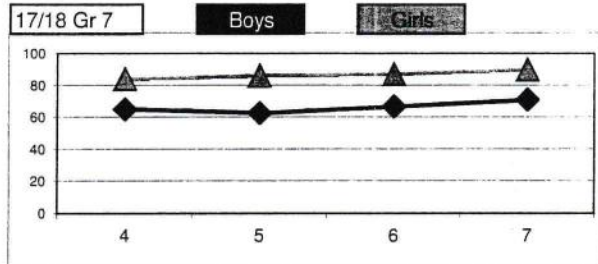
Intermediate - Writing

Percentage of Students Achieving C or Above

Chaffey-B Gender Cohort Tracking

Boys	4	5	6	7
17/18 Gr 7	65	63	67	71
17/18 Gr 6	70	83	85	

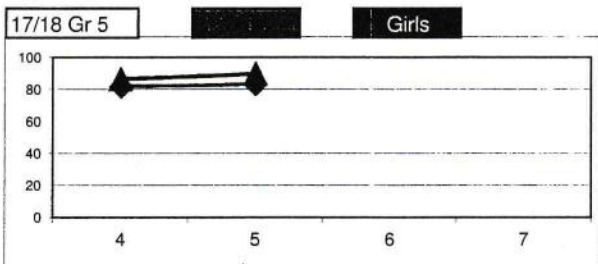
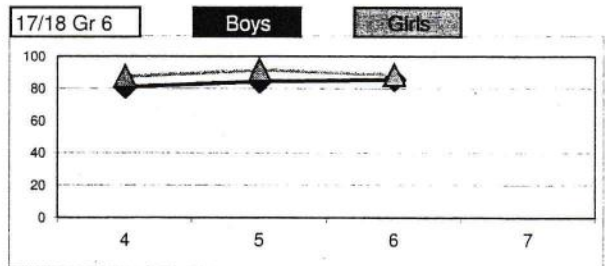
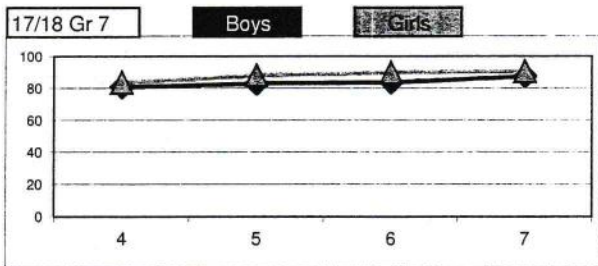
Girls	4	5	6	7
17/18 Gr 7	84	86	87	90
17/18 Gr 5	86	97		



Burnaby Cohort Tracking

Boys	4	5	6	7
17/18 Gr 7	81	83	84	87
17/18 Gr 6	81	85	86	

Girls	4	5	6	7
17/18 Gr 7	84	88	90	91
17/18 Gr 6	88	92	89	
17/18 Gr 5	86	90		



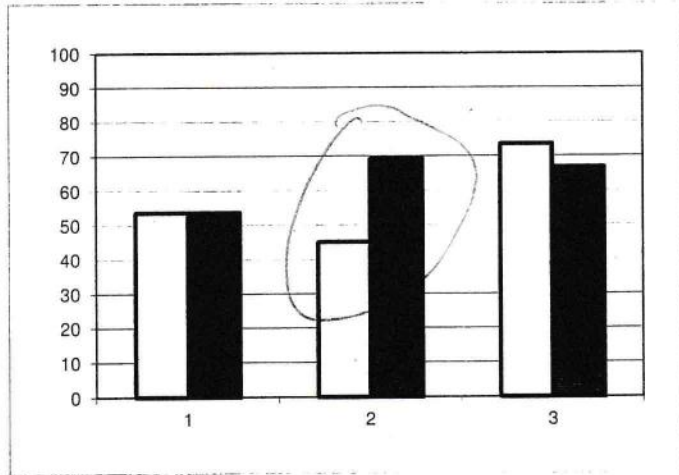
2017/18 Language Arts Report Card Summary

Primary - Reading

Percentage of Students Meeting or Exceeding Expectations

Chaffey-B - Gender Split

	1	2	3
Boys	54	45	74
Girls	54	69	67

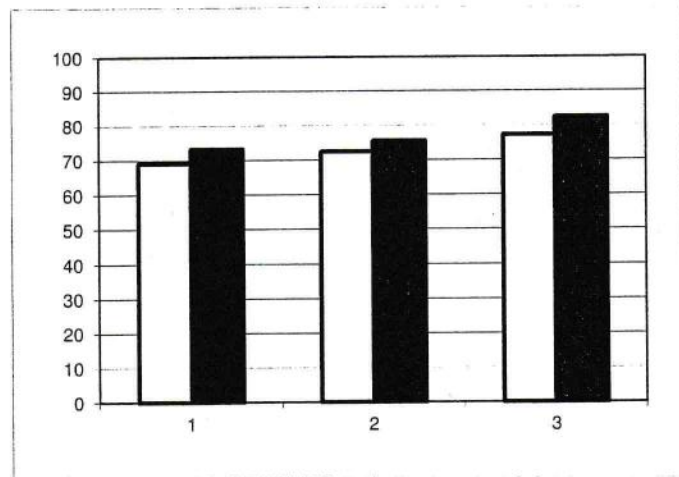


Boys

Girls

Burnaby - Gender Split

	1	2	3
Boys	69	72	77
Girls	73	76	82



Boys

Girls

2017/18 Language Arts Report Card Summary

Primary - Reading

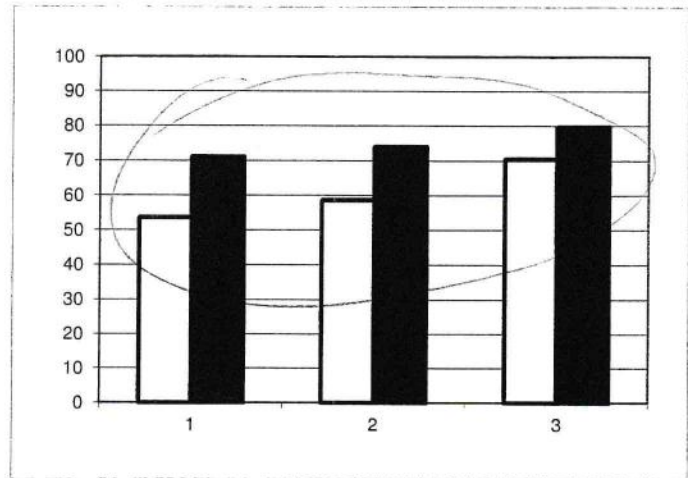
Percentage of Students Meeting or Exceeding Expectations

All Students

	1	2	3
Chaffey-B	54	59	70
Burnaby	71	74	80

Chaffey-B

Burnaby



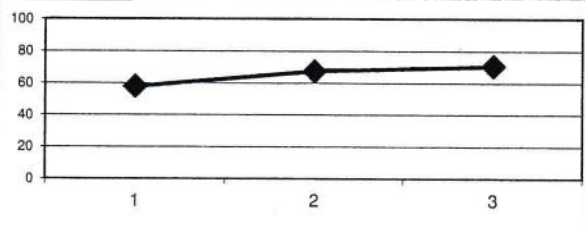
Primary - Reading

Percentage of Students Meeting or Exceeding Expectations

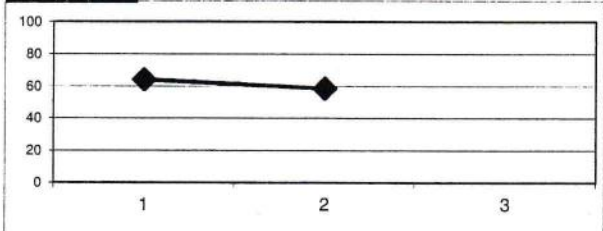
Chaffey-B Cohort Tracking

	1	2	3
17/18 Gr 3	58	67	70
17/18 Gr 2	64	59	

17/18 Gr 3



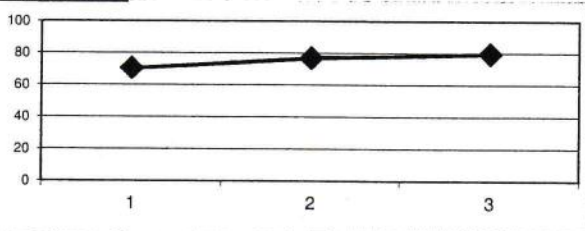
17/18 Gr 2



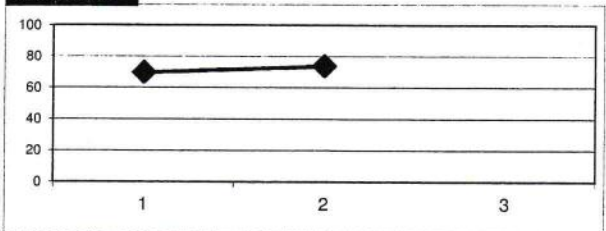
Burnaby Cohort Tracking

	1	2	3
17/18 Gr 3	70	77	80
17/18 Gr 2	70	74	

17/18 Gr 3



17/18 Gr 2



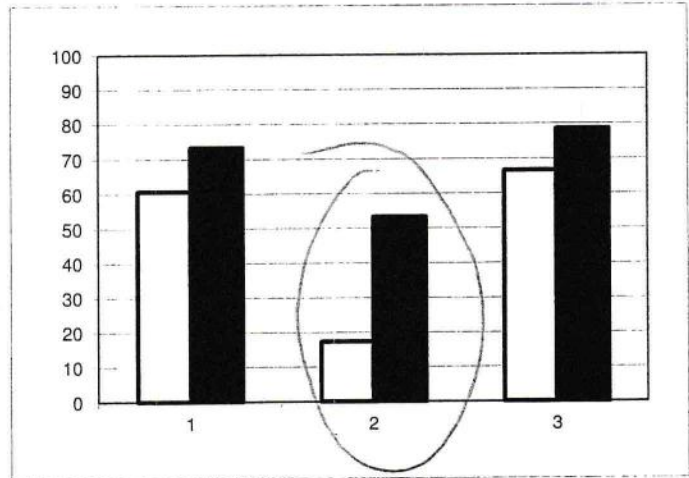
2017/18 Language Arts Report Card Summary

Primary - Speaking and Listening

Percentage of Students Meeting or Exceeding Expectations

Chaffey-B - Gender Split

	1	2	3
Boys	61	17	67
Girls	73	53	79

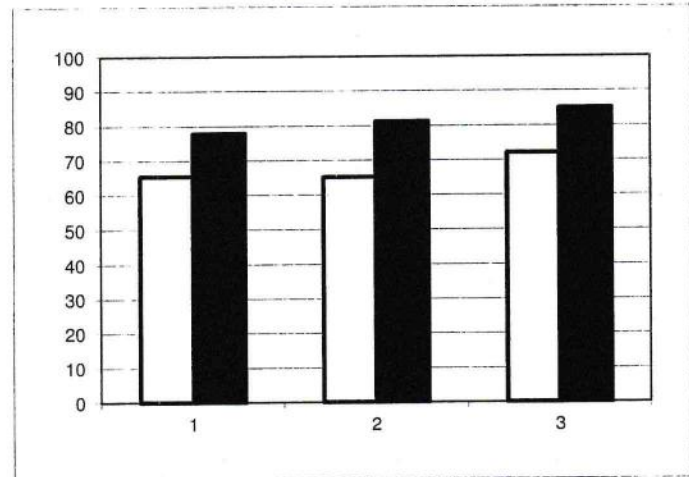


Boys

Girls

Burnaby - Gender Split

	1	2	3
Boys	65	65	72
Girls	78	81	85



Boys

Girls

2017/18 Language Arts Report Card Summary

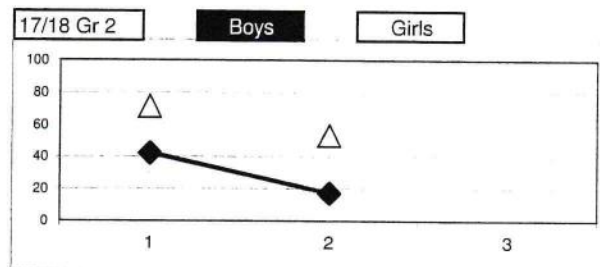
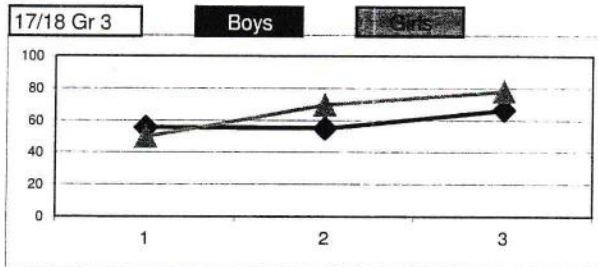
Primary - Speaking and Listening

Percentage of Students Meeting or Exceeding Expectations

Chaffey-B Gender Cohort Tracking

Boys	1	2	3
17/18 Gr 3	56	55	67
17/18 Gr 2	42	17	

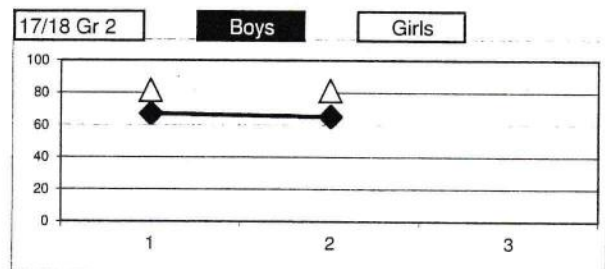
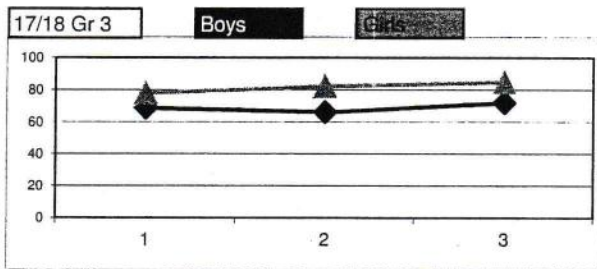
Girls	1	2	3
17/18 Gr 3	50	70	79
17/18 Gr 2	71	53	



Burnaby Gender Cohort Tracking

Boys	1	2	3
17/18 Gr 3	69	66	72
17/18 Gr 2	67	65	

Girls	1	2	3
17/18 Gr 3	78	82	85
17/18 Gr 2	81	81	



2017/18 Language Arts Report Card Summary

Kindergarten *Number of students not yet meeting expectations in literacy development, who may require additional support in grade 1*

		Number	Percent			Number	Percent			Number	Percent
Chaffey-B Burnaby	All Students	17	31	Boys		13	43	Girls		4	16

Primary and Intermediate report cards

Data is extracted from Primary and Intermediate report cards and matched to demographic information to inform on the following charts of summary data.

Primary - Speaking and Listening

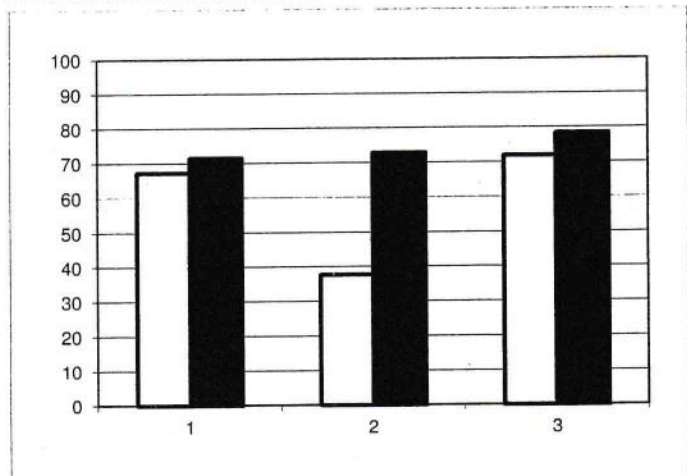
Percentage of Students Meeting or Exceeding Expectations

All Students

	1	2	3
Chaffey-B	67	38	72
Burnaby	72	73	78

Chaffey-B

Burnaby



2017/18 Language Arts Report Card Summary

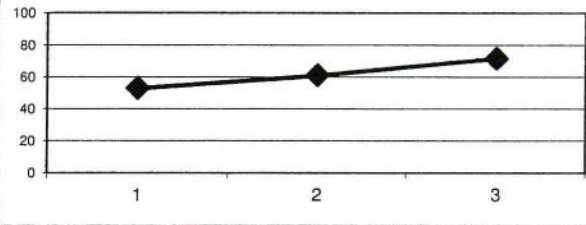
Primary - Speaking and Listening

Percentage of Students Meeting or Exceeding Expectations

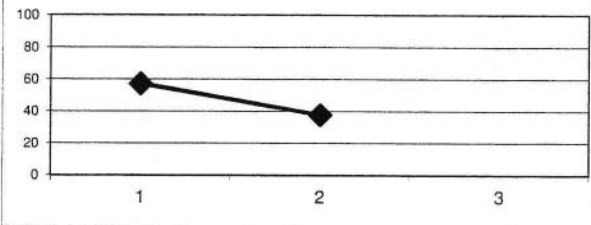
Chaffey-B Cohort Tracking

	1	2	3
17/18 Gr 3	53	61	72
17/18 Gr 2	57	38	

17/18 Gr 3



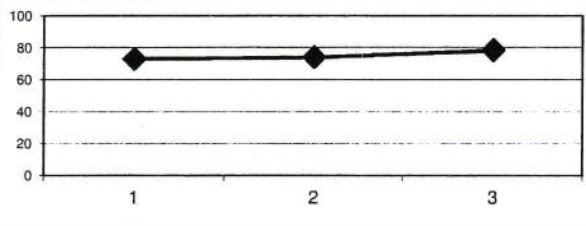
17/18 Gr 2



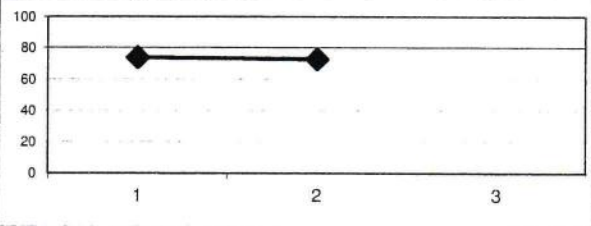
Burnaby Cohort Tracking

	1	2	3
17/18 Gr 3	73	74	78
17/18 Gr 2	74	73	

17/18 Gr 3



17/18 Gr 2



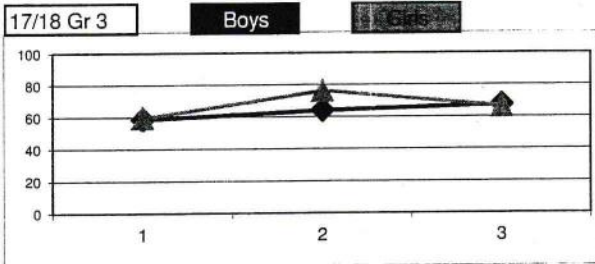
2017/18 Language Arts Report Card Summary

Primary - Writing

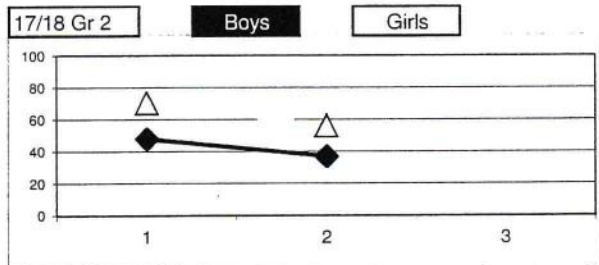
Percentage of Students Meeting or Exceeding Expectations

Chaffey-B Gender Cohort Tracking

Boys	1	2	3
17/18 Gr 3	59	64	68
17/18 Gr 2	48	37	

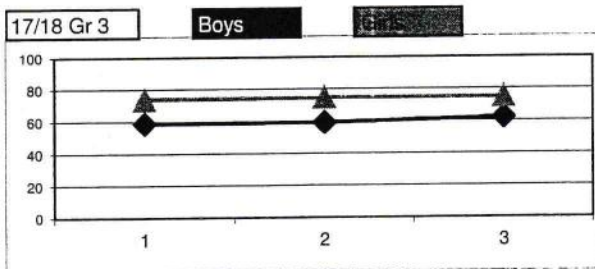


Girls	1	2	3
17/18 Gr 2	70	56	

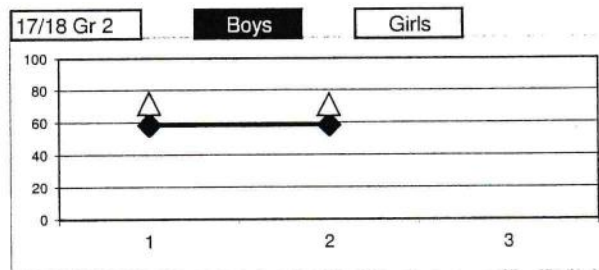


Burnaby Gender Cohort Tracking

Boys	1	2	3
17/18 Gr 3	59	59	62
17/18 Gr 2	59	58	



Girls	1	2	3
17/18 Gr 2	72	71	



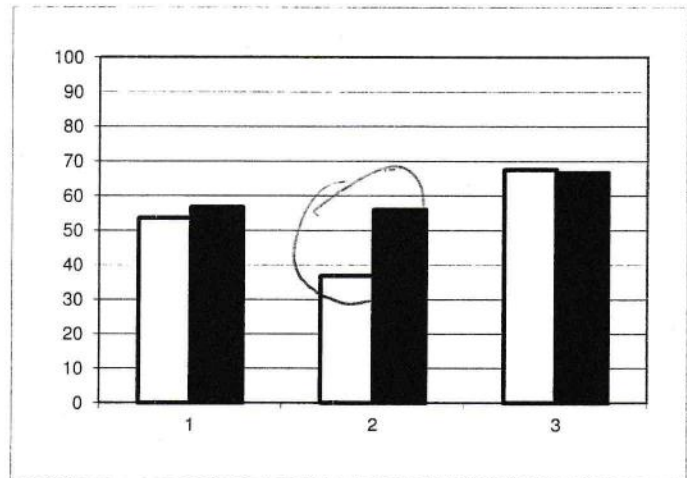
2017/18 Language Arts Report Card Summary

Primary - Writing

Percentage of Students Meeting or Exceeding Expectations

Chaffey-B - Gender Split

	1	2	3
Boys	54	37	68
Girls	57	56	67

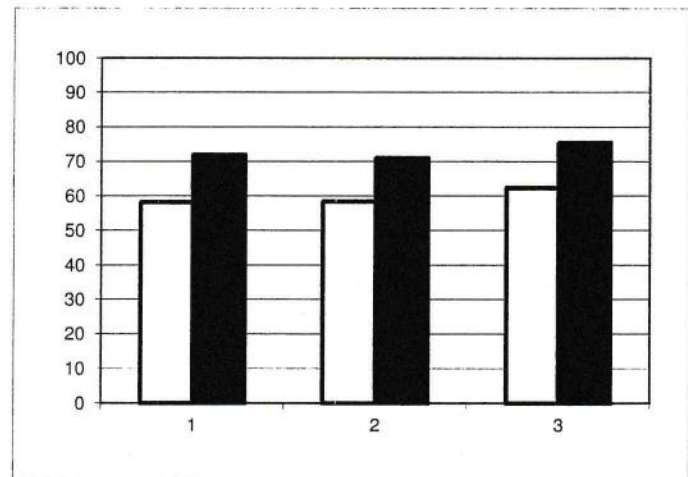


Boys

Girls

Burnaby - Gender Split

	1	2	3
Boys	58	58	62
Girls	72	71	75



Boys

Girls

2017/18 Language Arts Report Card Summary

Primary - Writing

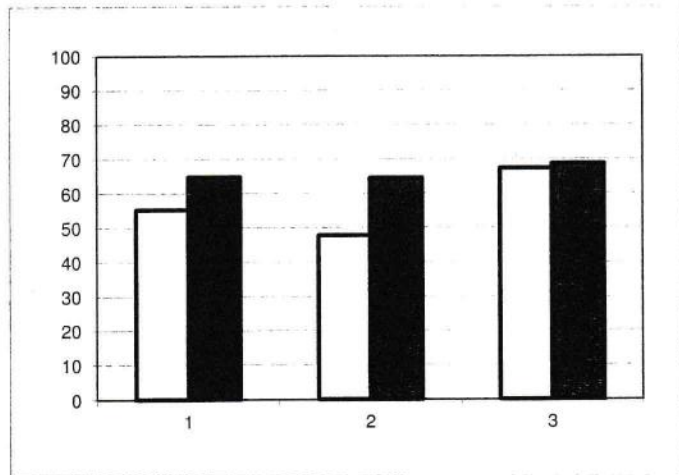
Percentage of Students Meeting or Exceeding Expectations

All Students

	1	2	3
Chaffey-B	55	48	67
Burnaby	65	64	69

Chaffey-B

Burnaby



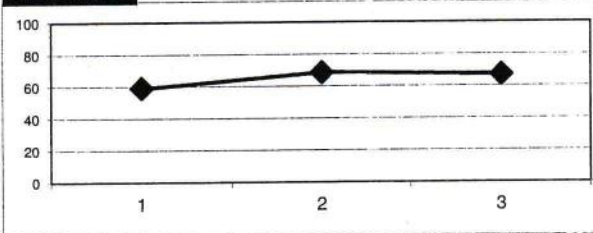
Primary - Writing

Percentage of Students Meeting or Exceeding Expectations

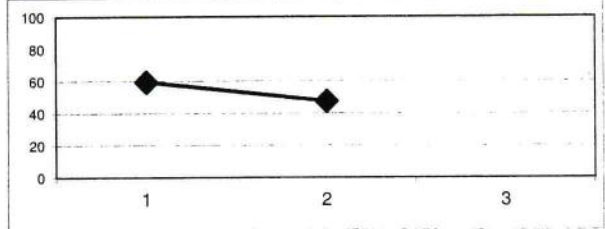
Chaffey-B Cohort Tracking

	1	2	3
17/18 Gr 3	59	69	67
17/18 Gr 2	60	48	

17/18 Gr 3



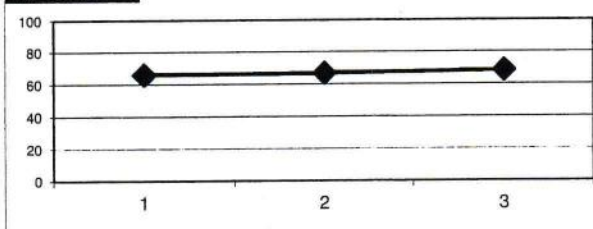
17/18 Gr 2



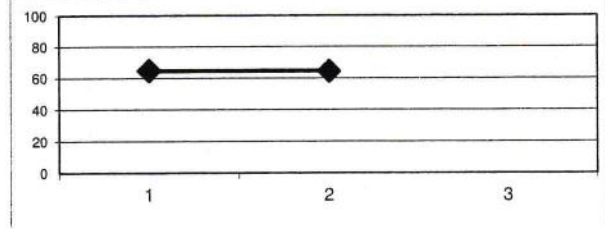
Burnaby Cohort Tracking

	1	2	3
17/18 Gr 3	66	67	69
17/18 Gr 2	65	64	

17/18 Gr 3



17/18 Gr 2



2017/18 Language Arts Report Card Summary

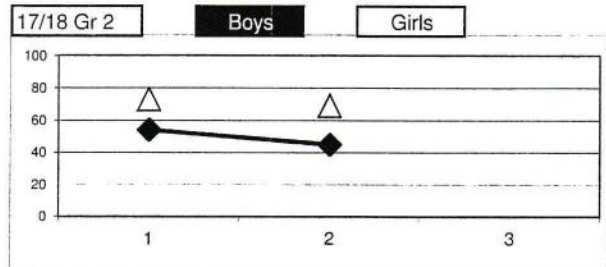
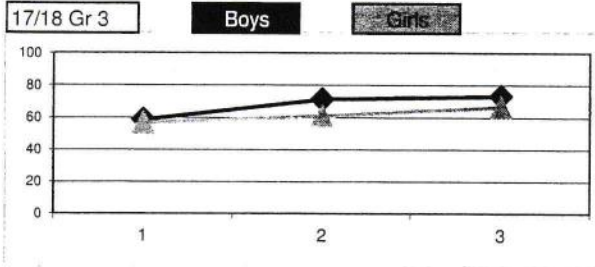
Primary - Reading

Percentage of Students Meeting or Exceeding Expectations

Chaffey-B Gender Cohort Tracking

Boys	1	2	3
17/18 Gr 3	59	71	74
17/18 Gr 2	54	45	

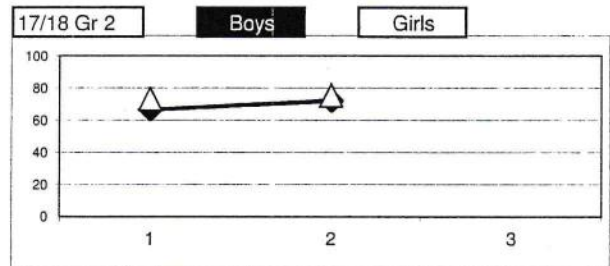
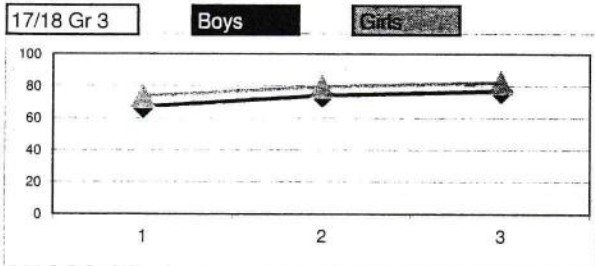
Girls	1	2	3
17/18 Gr 3	57	67	67
17/18 Gr 2	73	69	



Burnaby Gender Cohort Tracking

Boys	1	2	3
17/18 Gr 3	67	74	77
17/18 Gr 2	67	72	

Girls	1	2	3
17/18 Gr 3	74	80	82
17/18 Gr 2	73	76	



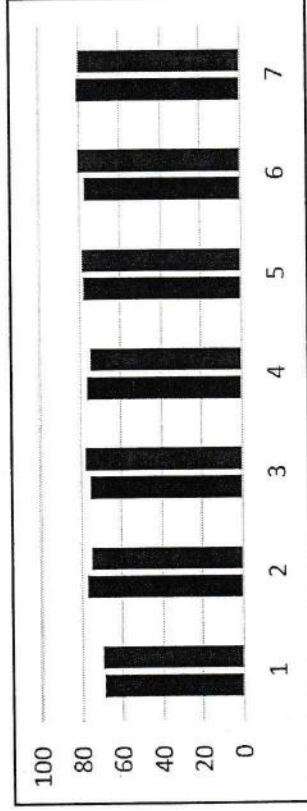
2017-18 Performance Standards

Writing - Percentage of Students Minimally Meeting, Fully Meeting or Exceeding Expectations

Burnaby

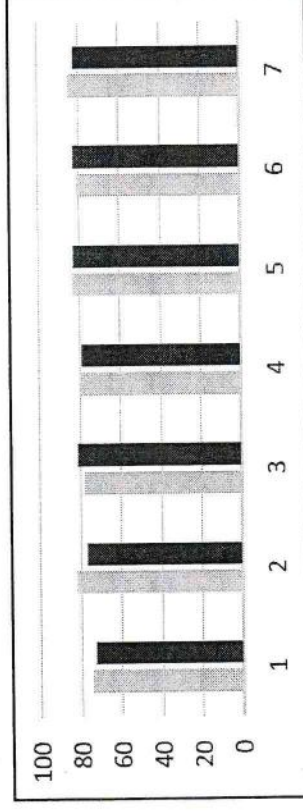
All Students

	Grade						
	1	2	3	4	5	6	7
2016/17	69	77	75	77	78	78	81
2017/18	70	75	78	75	79	81	80



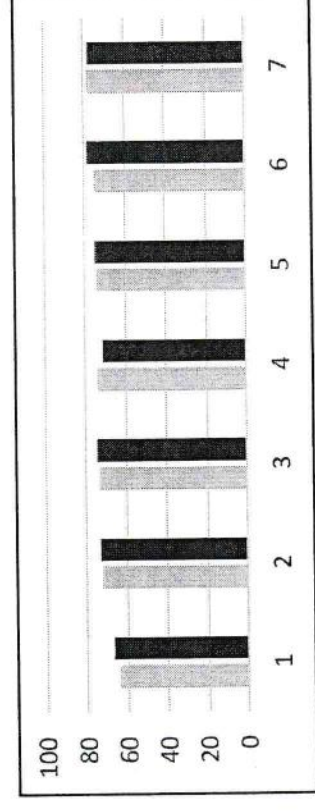
Female

	Grade						
	1	2	3	4	5	6	7
2016/17	75	82	78	80	83	81	85
2017/18	73	77	81	79	83	83	82



Male

	Grade						
	1	2	3	4	5	6	7
2016/17	64	72	73	74	74	75	78
2017/18	67	73	75	71	75	79	78



Level 1 and 2 ELL students are not measured on grade level Performance Standards scale.

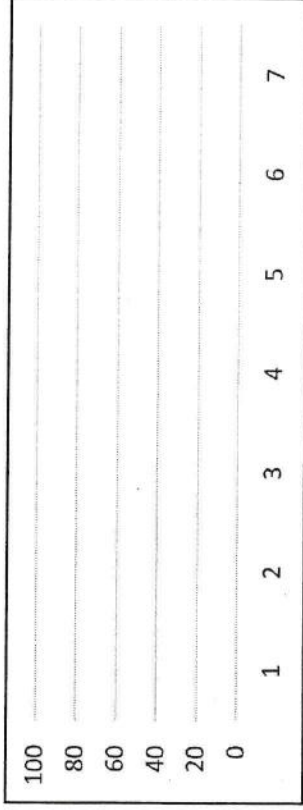
2017-18 Performance Standards

Writing - Percentage of Students Minimally Meeting, Fully Meeting or Exceeding Expectations

Chaffey-Burke Elementary

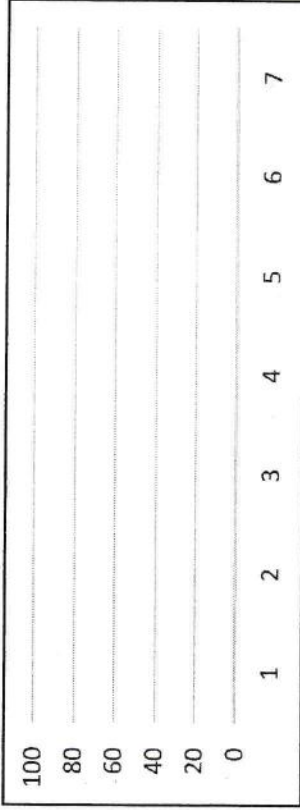
All Students

	Grade						
	1	2	3	4	5	6	7
2016/17							
2017/18							



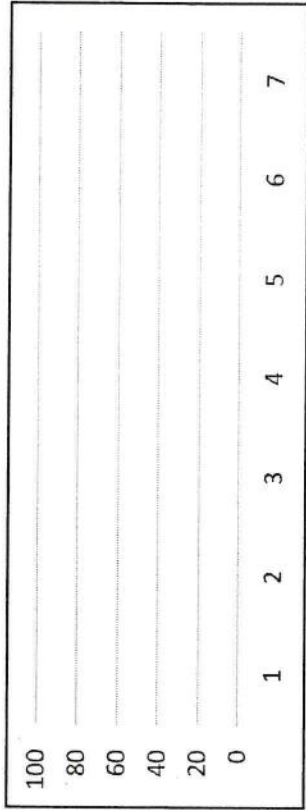
Female

	Grade						
	1	2	3	4	5	6	7
2016/17							
2017/18							



Male

	Grade						
	1	2	3	4	5	6	7
2016/17							
2017/18							



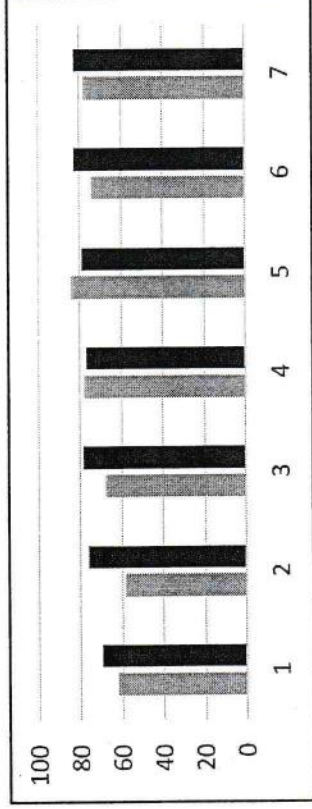
Level 1 and 2 ELL students are not measured on grade level Performance Standards scale.

2017-18 Performance Standards

Reading - Percentage of Students Minimally Meeting, Fully Meeting or Exceeding Expectations

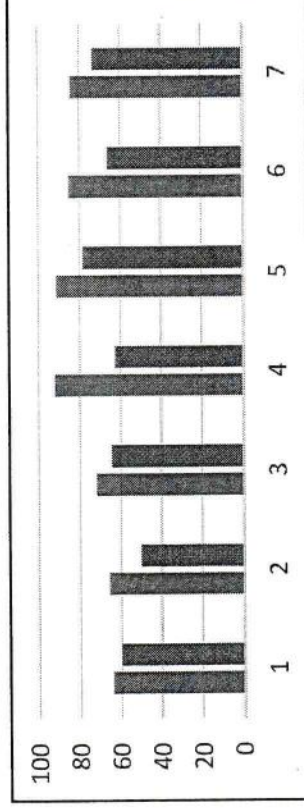
All Students

School	Grade						
	1	2	3	4	5	6	7
Burnaby	62	58	68	78	85	74	78
	70	76	79	77	79	83	83



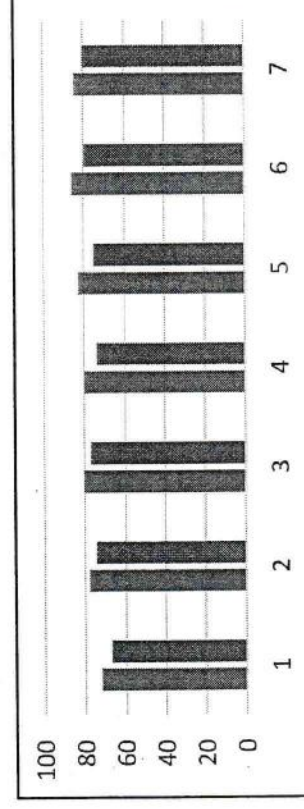
Chaffey-Burke Elementary

	Grade						
	1	2	3	4	5	6	7
Female	64	66	72	92	91	85	84
Male	60	50	64	63	78	66	73



Burnaby

	Grade						
	1	2	3	4	5	6	7
Female	72	78	80	80	83	86	85
Male	67	74	77	74	75	80	81



Level 1 and 2 ELL students are not measured on grade level Performance Standards scale.

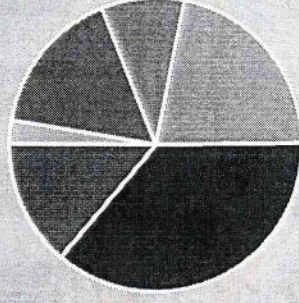
2017-18 Performance Standards

Reading

Chaffey-Burke Elementary

Pie shows 'All Students'

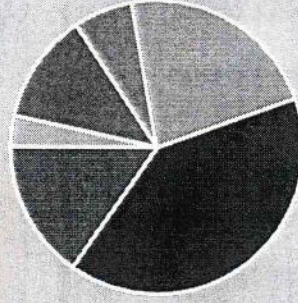
All Students (Grades 1-7)	Modified Program or SLP		ELL Levels 1 and 2		Not Yet Within Expectations		Meeting Expectations (Minimal Level)		Fully Meets Expectations		Exceeds Expectations	
	#	%	#	%	#	%	#	%	#	%	#	%
All Students	13	3	82	16	46	9	109	22	183	36	70	14
Female	3	1	32	13	15	6	51	21	96	40	41	17
Male	10	4	50	19	31	12	58	22	87	33	29	11
Indigenous	0	0	0	0	4	44	3	33	2	22	0	0
ELL	0	0	0	0	5	3	51	33	77	50	20	13



Burnaby

Pie shows 'All Students'

All Students (Grades 1-7)	Modified Program or SLP		ELL Levels 1 and 2		Not Yet Within Expectations		Meeting Expectations (Minimal Level)		Fully Meets Expectations		Exceeds Expectations	
	#	%	#	%	#	%	#	%	#	%	#	%
All Students	425	3	1540	12	818	7	2814	22	5055	40	1920	15
Female	156	3	700	12	325	5	1269	21	2489	41	1122	19
Male	269	4	840	13	493	8	1545	24	2566	39	798	12
Indigenous	27	8	20	6	81	23	126	35	93	26	11	3
ELL	16	0	1681	47	85	2	567	16	1034	29	179	5



Level 1 and 2 ELL students are not measured on grade level Performance Standards scale.

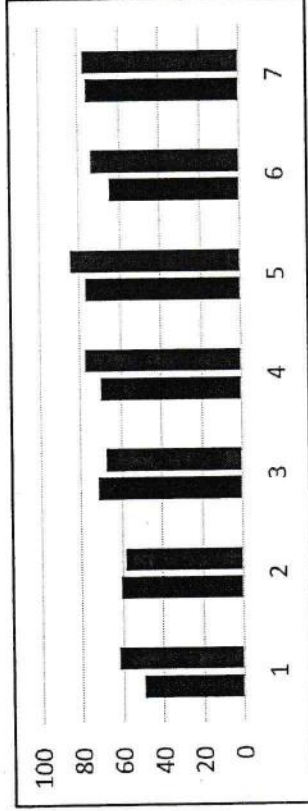
2017-18 Performance Standards

Reading - Percentage of Students Minimally Meeting, Fully Meeting or Exceeding Expectations

Chaffey-Burke Elementary

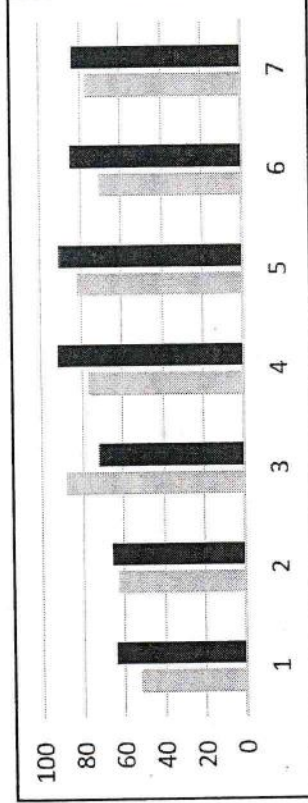
All Students

	Grade						
	1	2	3	4	5	6	7
2016/17	49	61	72	70	77	65	76
2017/18	62	58	68	78	85	74	78



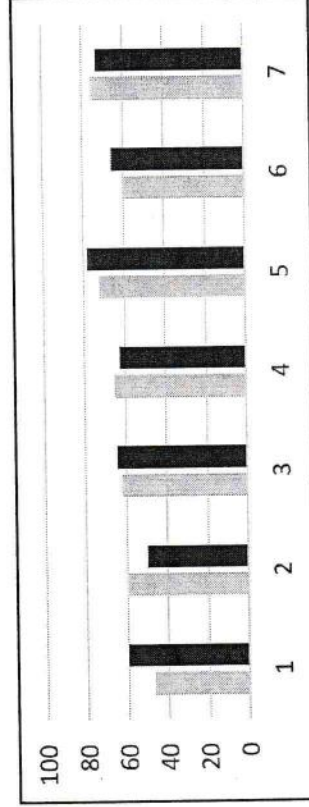
Female

	Grade						
	1	2	3	4	5	6	7
2016/17	52	63	88	76	82	71	77
2017/18	64	66	72	92	91	85	84



Male

	Grade						
	1	2	3	4	5	6	7
2016/17	47	60	62	65	72	60	76
2017/18	60	50	64	63	78	66	73



Level 1 and 2 ELL students are not measured on grade level Performance Standards scale.

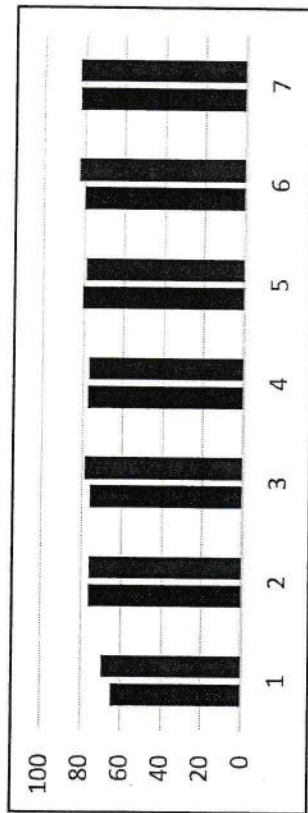
2017-18 Performance Standards

Reading - Percentage of Students Minimally Meeting, Fully Meeting or Exceeding Expectations

Burnaby

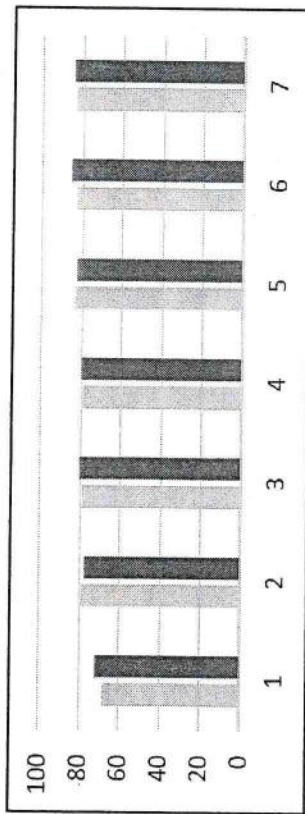
All Students

	Grade						
	1	2	3	4	5	6	7
2016/17	65	76	76	77	81	80	82
2017/18	70	76	79	77	79	83	83



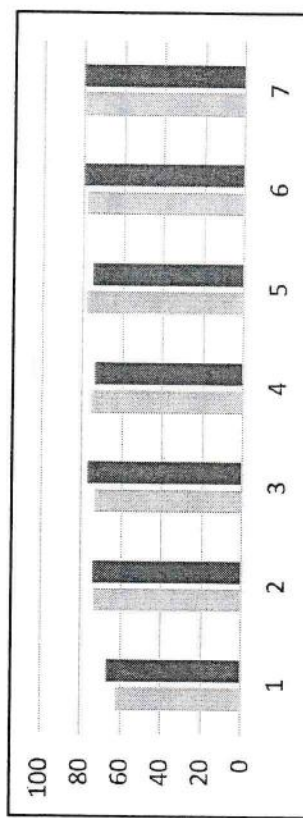
Female

	Grade						
	1	2	3	4	5	6	7
2016/17	68	80	79	79	84	83	84
2017/18	72	78	80	80	83	86	85



Male

	Grade						
	1	2	3	4	5	6	7
2016/17	62	73	73	75	78	78	81
2017/18	67	74	77	74	75	80	81





Level 1 and 2 ELL students are not measured on grade level Performance Standards scale.


Foundation Skills Assessment

Chaffey-Burke Elementary - Writers Only

Grade 4 - 2017/18

Reading Comprehension		Participation Rate		Emerging		On Track		Extending	
		#	%	#	%	#	%	#	%
	Writers Only	64	86%	10	16%	45	70%	9	14%
	Female	32	89%	5	16%	21	66%	6	19%
	Male	32	84%	5	16%	24	75%	3	9%
	Aboriginal	0	0%	0	N/A	0	N/A	0	N/A
	ELL	40	83%	4	10%	33	83%	3	8%
	Special Needs*	1	14%	0	0%	1	100%	0	0%

Writing		Participation Rate		Emerging		On Track		Extending	
		#	%	#	%	#	%	#	%
	Writers Only	62	84%	13	21%	49	79%	0	0%
	Female	30	83%	2	7%	28	93%	0	0%
	Male	32	84%	11	34%	21	66%	0	0%
	Aboriginal	0	0%	0	N/A	0	N/A	0	N/A
	ELL	38	79%	9	24%	29	76%	0	0%
	Special Needs*	1	14%	0	0%	1	100%	0	0%

Numeracy		Participation Rate		Emerging		On Track		Extending	
		#	%	#	%	#	%	#	%
	Writers Only	64	86%	12	19%	47	73%	5	8%
	Female	32	89%	6	19%	24	75%	2	6%
	Male	32	84%	6	19%	23	72%	3	9%
	Aboriginal	0	0%	0	N/A	0	N/A	0	N/A
	ELL	40	83%	7	18%	32	80%	1	3%
	Special Needs*	1	14%	0	0%	1	100%	0	0%

*Note: Special Needs does not include Gifted.

Foundation Skills Assessment

Chaffey-Burke Elementary - Writers Only

Grade 7 - 2017/18

Reading Comprehension		Participation Rate		Emerging		On Track		Extending	
		#	%	#	%	#	%	#	%
	Writers Only	64	89%	10	16%	48	75%	6	9%
	Female	29	91%	2	7%	23	79%	4	14%
	Male	35	88%	8	23%	25	71%	2	6%
	Aboriginal	0	0%	0	N/A	0	N/A	0	N/A
	ELL	12	80%	4	33%	8	67%	0	0%
	Special Needs*	1	17%	1	100%	0	0%	0	0%

Writing		Participation Rate		Emerging		On Track		Extending	
		#	%	#	%	#	%	#	%
	Writers Only	61	85%	3	5%	55	90%	3	5%
	Female	29	91%	1	3%	27	93%	1	3%
	Male	32	80%	2	6%	28	88%	2	6%
	Aboriginal	0	0%	0	N/A	0	N/A	0	N/A
	ELL	10	67%	0	0%	10	100%	0	0%
	Special Needs*	1	17%	0	0%	1	100%	0	0%

Numeracy		Participation Rate		Emerging		On Track		Extending	
		#	%	#	%	#	%	#	%
	Writers Only	63	88%	12	19%	42	67%	9	14%
	Female	29	91%	4	14%	23	79%	2	7%
	Male	34	85%	8	24%	19	56%	7	21%
	Aboriginal	0	0%	0	N/A	0	N/A	0	N/A
	ELL	12	80%	5	42%	4	33%	3	25%
	Special Needs*	1	17%	1	100%	0	0%	0	0%

*Note: Special Needs does not include Gifted.